

# SILS MARIA

**PANTHER**  
NATIONAL



SALES@PANTHERNATIONAL.COM

561.292.0080

PANTHERNATIONAL.COM

7,885  
6,429

TOTAL SF  
A/C LIVING AREA

2  
STORY

5  
BEDROOMS

5  
BATHS

1  
POWDER  
ROOMS

1  
DEN

3  
CAR GARAGE



ORAL REPRESENTATIONS CANNOT BE RELIED UPON AS CORRECTLY STATING REPRESENTATIONS OF THE SELLER. FOR CORRECT REPRESENTATIONS, MAKE REFERENCE TO THIS BROCHURE AND TO THE DOCUMENTS REQUIRED BY SECTION 718.503, FLORIDA STATUTES TO BE FURNISHED BY A SELLER TO A BUYER OR LESSEE. ALL DIMENSIONS, FEATURES, AND SPECIFICATIONS ARE APPROXIMATE AND SUBJECT TO CHANGE WITHOUT NOTICE. BROKERS WARMLY WELCOMED.

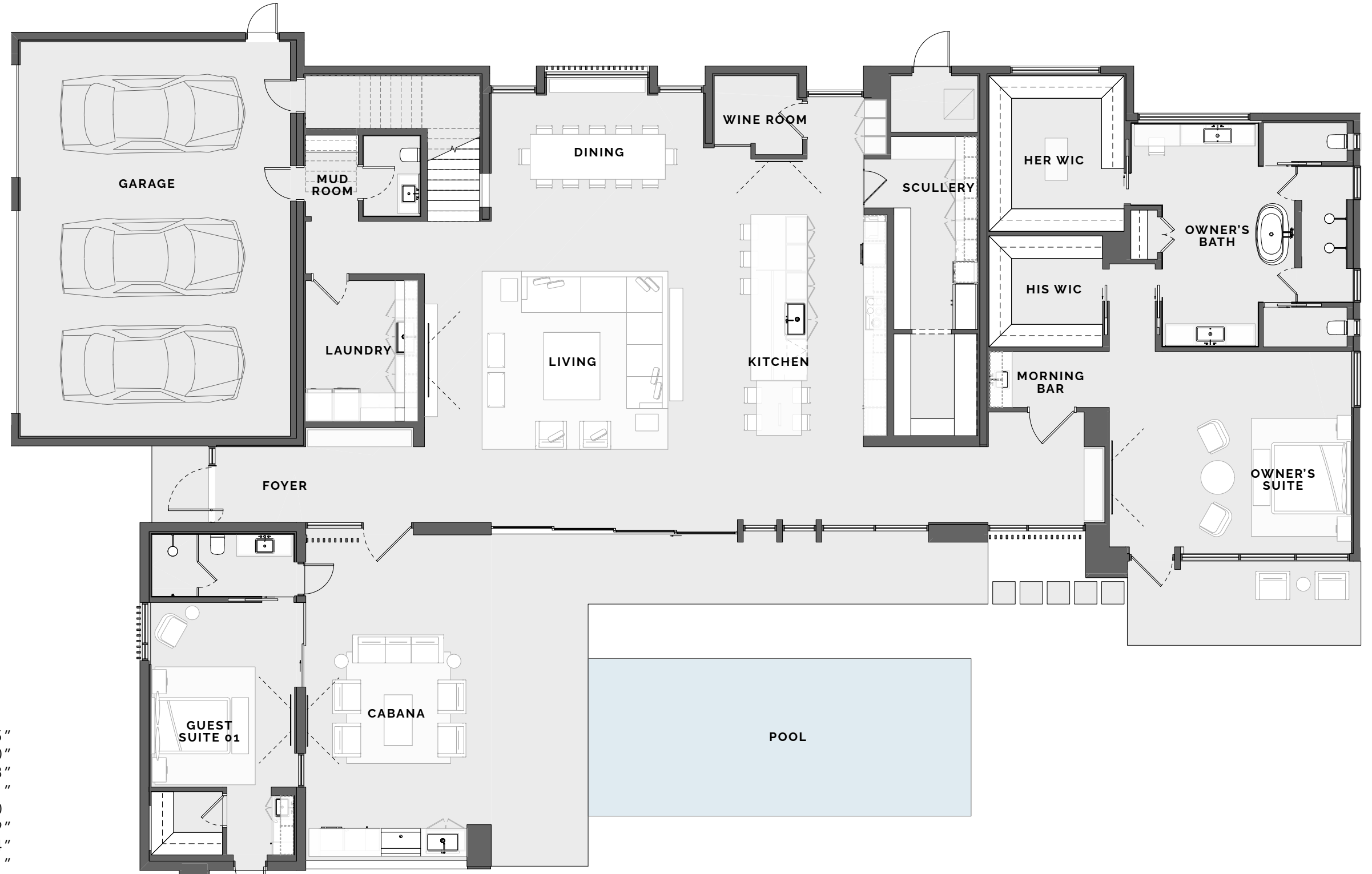


# SILS MARIA

## FIRST FLOOR

7,885  
6,429

TOTAL SF  
A/C LIVING AREA



OWNER'S SUITE:	18'-1" x	21'-5"
GUEST SUITE 01:	16'-4" x	13'-0"
CABANA:	27'-10" x	16'-8"
HIS WIC:	9'-10" x	10'-1"
HER WIC:	13'-9" x	12'-0"
LIVING ROOM:	26'-8" x	24'-9"
KITCHEN:	33'-3" x	16'-4"
OWNER'S BATH:	19'-10" x	19'-1"
DINING:	12'-10" x	19'-0"
SCULLERY:	17'-1" x	9'-2"
LAUNDRY:	12'-5" x	10'-0"
GARAGE:	35'-0" x	25'-0"



# SILS MARIA

## SECOND FLOOR

7,885  
6,429

TOTAL SF  
A/C LIVING AREA



JR. SUITE:	13'-8"	x	18'-5"
JR. SUITE TERRACE:	29'-7"	x	15'-7"
GUEST SUITE 01:	14'-0"	x	13'-10"
GUEST SUITE 02:	14'-10"	x	13'-5"
GUEST SUITES TERRACE:	8'-3"	x	43'-2"
DEN:	17'-9"	x	17'-7"
DEN TERRACE:	39'-10"	x	8'-1"





# SILS MARIA

REAR ELEVATION



SILS MARIA



PANTHERNATIONAL.COM



ORAL REPRESENTATIONS CANNOT BE RELIED UPON AS CORRECTLY STATING REPRESENTATIONS OF THE SELLER. FOR CORRECT REPRESENTATIONS, MAKE REFERENCE TO THIS BROCHURE AND TO THE DOCUMENTS REQUIRED BY SECTION 718.503, FLORIDA STATUTES TO BE FURNISHED BY A SELLER TO A BUYER OR LESSEE. ALL DIMENSIONS, FEATURES, AND SPECIFICATIONS ARE APPROXIMATE AND SUBJECT TO CHANGE WITHOUT NOTICE. BROKERS WARMLY WELCOMED.