



5,972
4,470

TOTAL SF
A/C LIVING AREA

1
STORY

4
BEDROOMS

4
BATHS

2
POWDER
ROOMS

3
CAR GARAGE

1
GOLF CART
PARKING

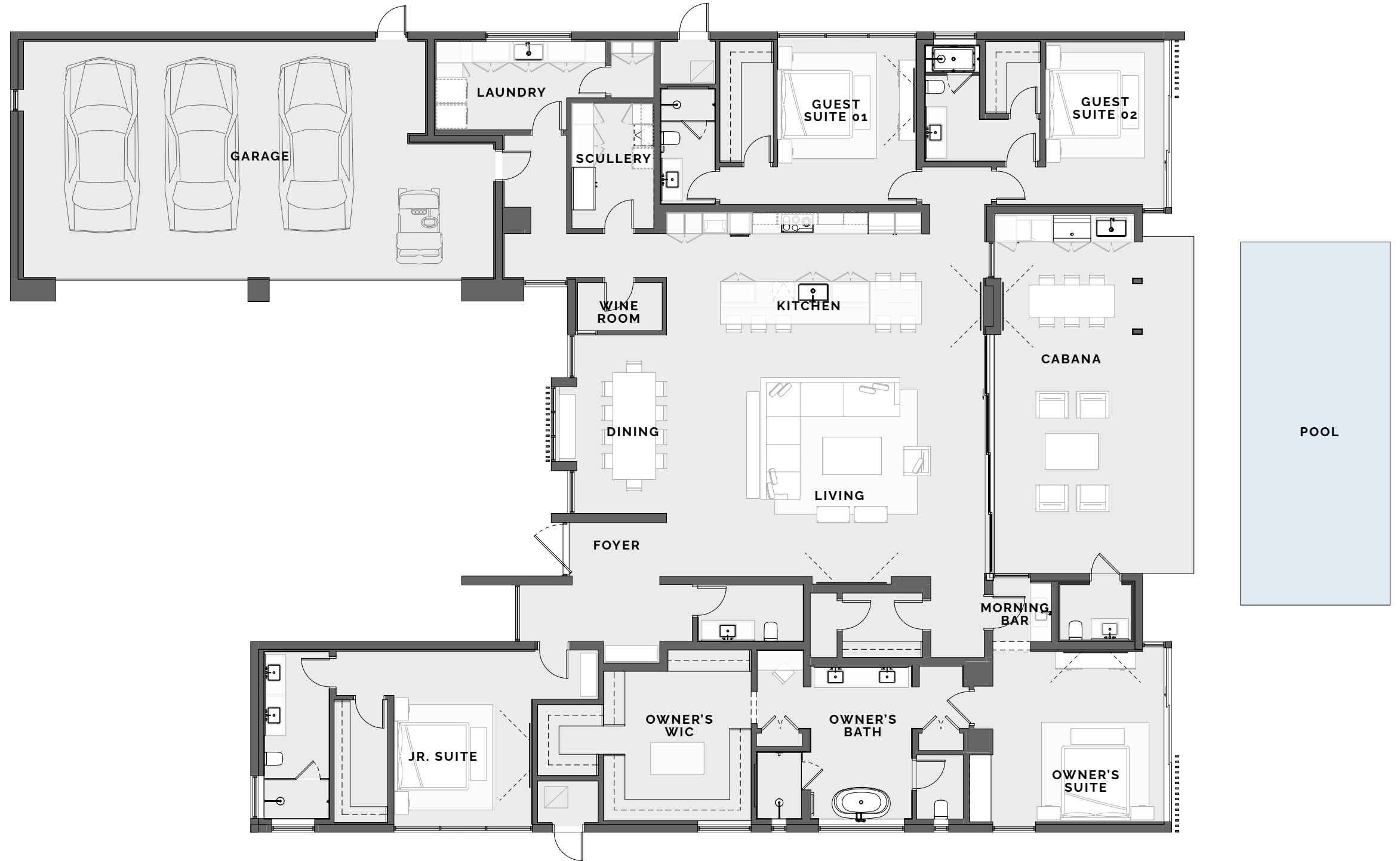


ORAL REPRESENTATIONS CANNOT BE RELIED UPON AS CORRECTLY STATING REPRESENTATIONS OF THE SELLER. FOR CORRECT REPRESENTATIONS, MAKE REFERENCE TO THIS BROCHURE AND TO THE DOCUMENTS REQUIRED BY SECTION 718.503, FLORIDA STATUTES TO BE FURNISHED BY A SELLER TO A BUYER OR LESSEE. ALL DIMENSIONS, FEATURES, AND SPECIFICATIONS ARE APPROXIMATE AND SUBJECT TO CHANGE WITHOUT NOTICE. BROKERS WARMLY WELCOMED.

BASEL

5,972
4,470

TOTAL SF
A/C LIVING AREA



OWNER'S SUITE:	16'-2" x 18'-7"
OWNER'S BATH:	16'-3" x 24'-10"
JR. SUITE:	16'-2" x 13'-0"
GUEST SUITE 01:	15'-3" x 13'-0"
GUEST SUITE 02:	15'-3" x 13'-0"
CABANA:	18'-9" x 36'-4"
OWNER'S WIC:	9'-9" x 20'-0"
LIVING ROOM:	28'-8" x 29'-8"
KITCHEN:	11'-6" x 29'-8"
DINING:	16'-8" x 10'-5"
SCULLERY:	17'-10" x 7'-6"
LAUNDRY:	8'-1" x 13'-10"
GARAGE:	22'-0" x 44'-0"



BASEL

REAR ELEVATION

