



ROYAL PALM RESIDENCES
BOCA RATON

CENTRAL RESIDENCES

3 BEDROOMS / 3.5 BATHS
DEN / PRIVATE ELEVATOR

304 + 404

INTERIOR	2,425 SQ. FT.
TERRACE	428 SQ. FT.
TOTAL LIVING	2,853 SQ. FT.



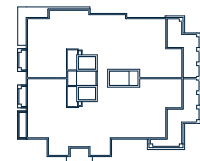
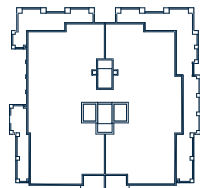
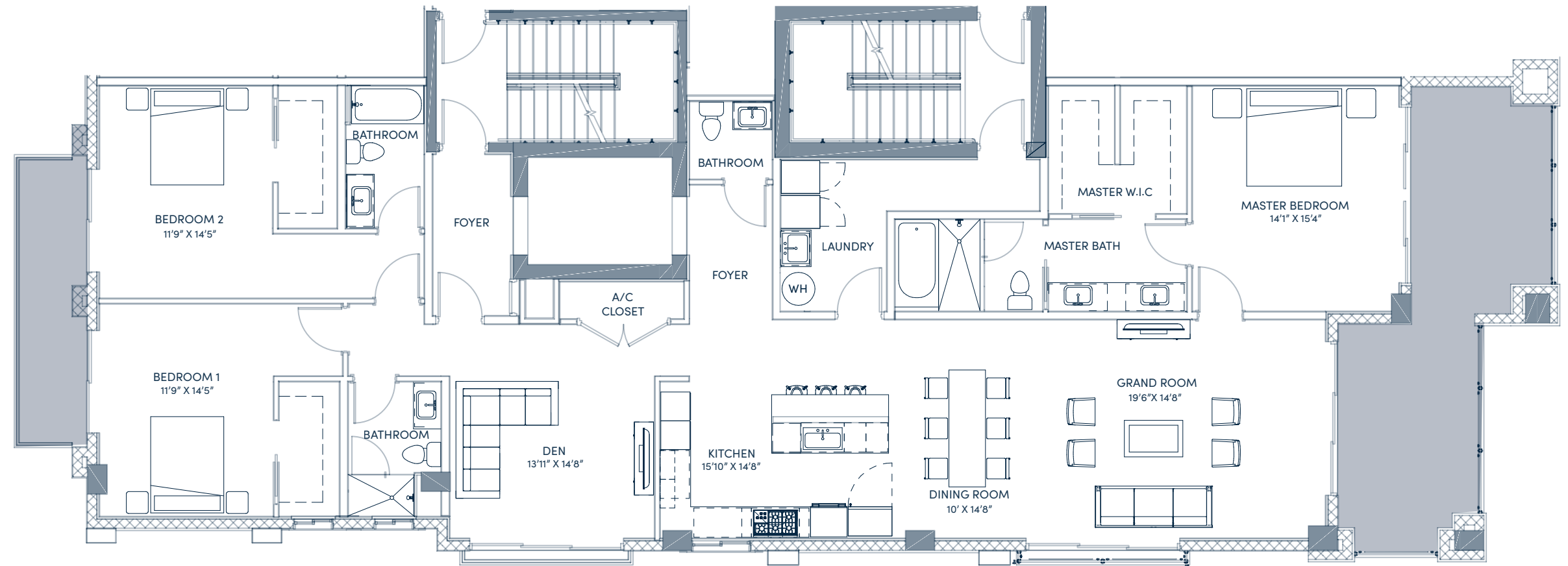
ROYAL PALM RESIDENCES
BOCA RATON

CENTRAL RESIDENCES

3 BEDROOMS/3.5 BATHS
DEN/PRIVATE ELEVATOR

304 + 404

INTERIOR 2,425 SQ. FT.
TERRACE 428 SQ. FT.
TOTAL LIVING 2,853 SQ. FT.



ORAL REPRESENTATIONS CANNOT BE RELIED UPON AS CORRECTLY STATING REPRESENTATIONS OF THE DEVELOPER. FOR CORRECT REPRESENTATIONS, MAKE REFERENCE TO THE DOCUMENTS REQUIRED BY SECTION 718.503, FLORIDA STATUTES, TO BE FURNISHED BY A DEVELOPER TO A BUYER OR LESSEE. All dimensions, layouts, artist renderings, specifications, prices and features are approximations and subject to availability and to change without notice, as recommended by the architect, contractor and/or developer, and/or as required by law. Stated dimensions are measured to the exterior boundaries if the exterior walls and corridor walls and to the centerline of interior demising and common walls, and in fact may vary from the dimensions of the actual living space. Oral representations cannot be relied upon as correctly stating the representations of the developer. For correct representations, make reference to project documents provided by developer to a buyer or lessee. All offers are subject to the terms and conditions of any sales or reservation agreement with the developer. Not an offer for or solicitation where prior registration is required or otherwise prohibited by these statutes. EQUAL HOUSING OPPORTUNITY. 🏠

