

PH.B.01

FLOOR 24

3 BEDROOM | 3 BATHROOM | DEN

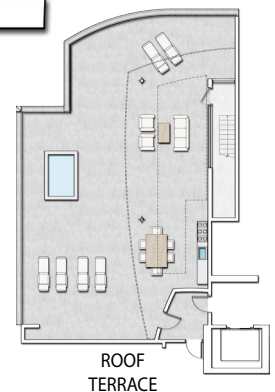
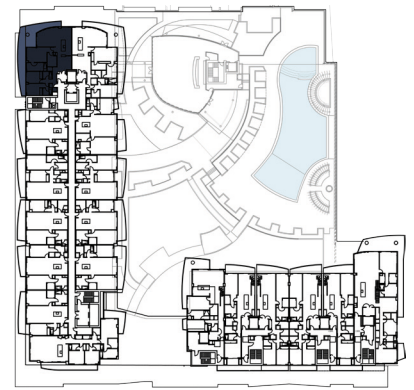
Ceiling Height 12 FT

Interior 2,140 sf

Terrace 2,803 sf

Total..... 4,943 sf

↑ INTRACOASTAL MARINA



NAUTILUS 220

LUXURY RESIDENCES | PROMENADE SHOPPING & DINING

WATERFRONT SALES MODEL AT LAKE PARK MARINA

220 LAKESHORE DRIVE | LAKE PARK, FLORIDA 33403 | 888-622-1811 | N220.COM

All dimensions are approximate and all floorplans and development plans are subject to change. There are various methods for calculating the total square footage of a condominium unit, and depending on the method of calculation, the quoted square footage of a condominium unit may vary by more than a nominal amount. The total condominium unit square footages as shown in this brochure are based on the "Architectural Method" of measurement and the exterior perimeter measurements of the condominium unit, which include exterior walls and interior columns, are fifty percent of demising walls. These square footage calculations are higher than the interior area space calculations for the condominium units. Please see the Declaration of Condominium for more information.

PH.B.01

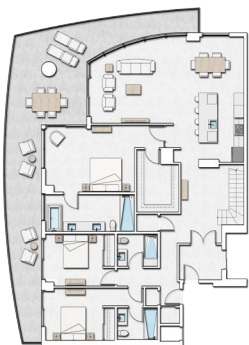
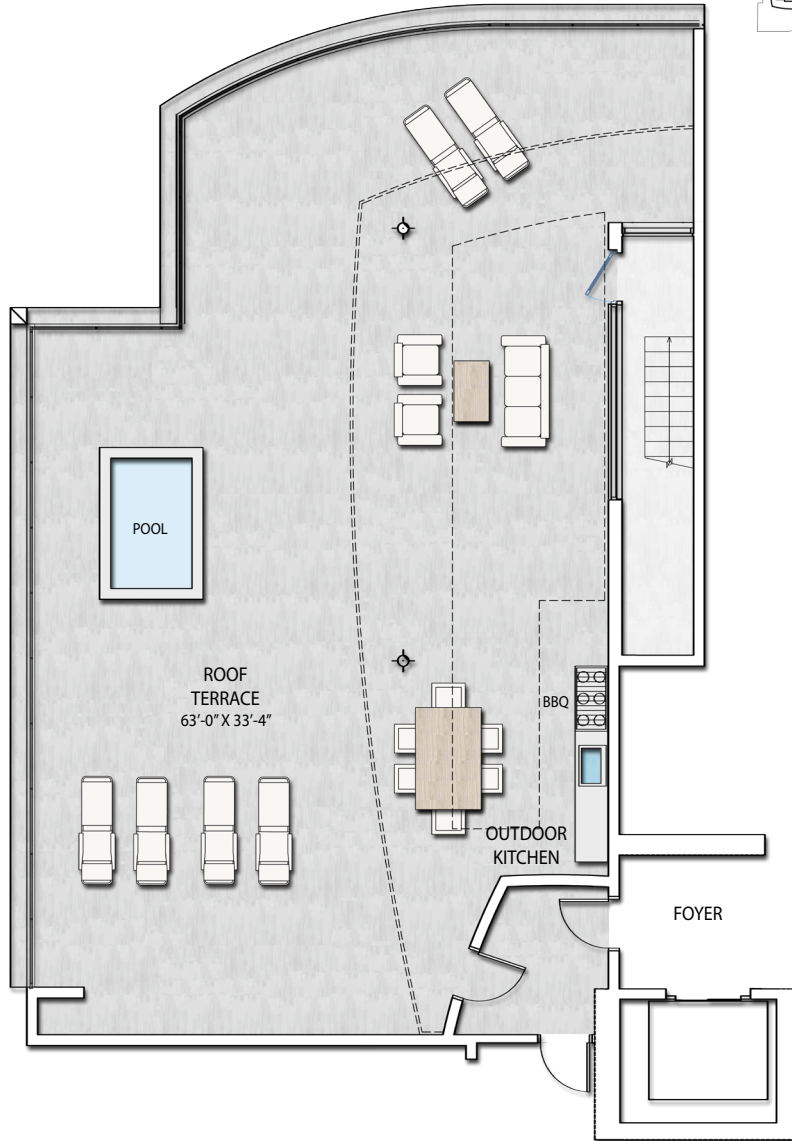
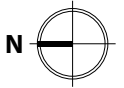
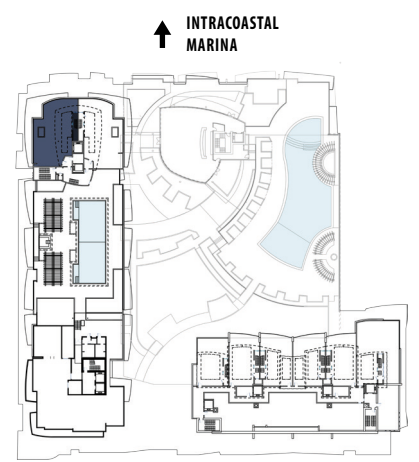
FLOOR 25

ROOF TERRACE

Interior 2,140 sf

Terrace 2,803 sf

Total..... 4,943 sf



PENTHOUSE

NAUTILUS 220

LUXURY RESIDENCES | PROMENADE SHOPPING & DINING

WATERFRONT SALES MODEL AT LAKE PARK MARINA

220 LAKESHORE DRIVE | LAKE PARK, FLORIDA 33403 | 888-622-1811 | N220.COM

All dimensions are approximate and all floorplans and development plans are subject to change. There are various methods for calculating the total square footage of a condominium unit, and depending on the method of calculation, the quoted square footage of a condominium unit may vary by more than a nominal amount. The total condominium unit square footages as shown in this brochure are based on the "Architectural Method" of measurement and the exterior perimeter measurements of the condominium unit, which include exterior walls and interior columns, are fifty percent of demising walls. These square footage calculations are higher than the interior area space calculations for the condominium units. Please see the Declaration of Condominium for more information.